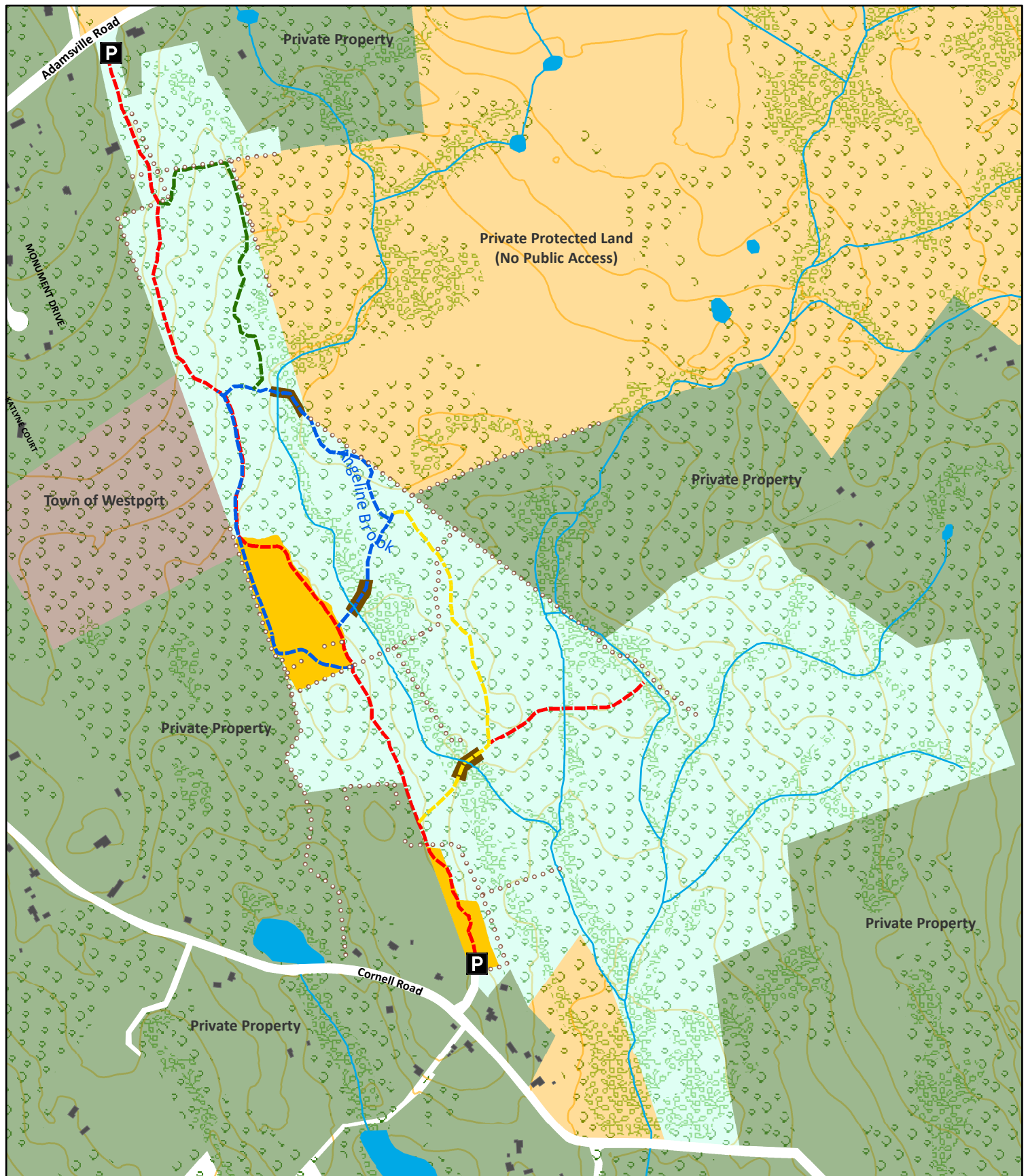


Herb Hadfield Conservation Area

~187 acres of protected land owned by the Westport Land Conservation Trust



Herb Hadfield Conservation Area
Private Protected Land
Private Property
Public Land

Forest
Forested Wetland
Streams/Brooks
Waterbodies
Meadow
Stone Walls
Houses/Buildings
10-Foot Contours

Trail
Boardwalk
Parking

0 250 500 1,000 Feet



Data Sources: MassGIS, Town of Westport and the WLCT.
Boundary lines and trail locations are approximate. March 2019.